



THE BANKNOTE VALIDATOR YOU CAN TRUST TO INCREASE YOUR PROFITS

With over 3 million banknote acceptors sold worldwide and 20 years of advancing technology, the MEI CASHFLOW® 2612 banknote validator uses:

- Non-contact sensing, eliminating contact points
- Patented smooth plastic tools, assuring no edges to catch a damp banknote
- Secure multi-wavelength sensors for high security

These features increase banknote acceptance and provide the industry's lowest jam rate, resulting in happier consumers, fewer service calls, and more profitable locations.

Enhanced security

MEI's current products rely on fully encased, optical sensors with advanced algorithms to reduce the acceptance of counterfeit currency and ensure consistent, high-quality recognition. The CASHFLOW® 2612 banknote acceptor's sensors greatly reduce vulnerability to both string frauds and invalid banknotes.

High four-way acceptance rate

Satisfy customers by accepting torn, wrinkled, Faded or dirty banknotes. Little or no banknote preparation is required and banknotes can be fed four ways (in either direction, face up or down).

Easy, time-saving setup

The CASHFLOW® 2612 banknote acceptor's design ensures convenient access to all switches. Easy-to-read labels explain switch settings. With the CASHFLOW® 2612, options can be easily customised on location via a simple-touse configuration coupon.

MEI FLASHPORT™ for future flexibility

The MEI CASHFLOW® 2612 accepts 5 € and 10 € banknotes in circulation. Also, the unit's re-programmable flash memory enables quick, easy updates of software files such as new currency designs or value coupons.



FEATURES AND BENEFITS

- High acceptance rates
- Industry's lowest jam rate
- Enhanced security to protect profits
- Fully optical sensors with advanced algorithms
- Options can be easily customised on location
- User-friendly design
- Sensors are designed to divert liquid from "salting" attempts. If "salted", the banknote acceptor is recovering without the need for a service call
- Water resistant
- Low maintenance

TECHNICAL SPECIFICATIONS

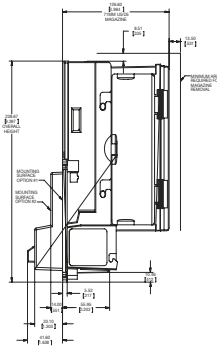
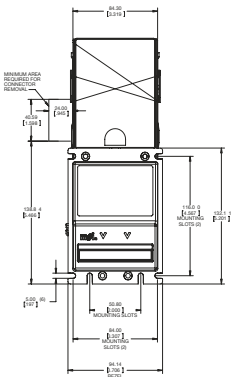
- Acceptance Rate: 97%
- Banknote: 5 € and 10 €
- Banknote Insertion: Lengthwise, four-way (face up or down, either direction)
- Transaction Speed: Approximately 4 seconds (from banknote insertion to completed bill-stacking)
- Interfaces: MEI Serial protocol, MDB, Multiple Pulse (Vending)
- Power Sources: 2 to 45 VDC (MBD), 90 to 135 VAC, 60Hz or 18 to 28 VAC, 60Hz
- Power Consumption
 - Standby: 5 watt
 - Acceptance: 10 watt
 - Full stack max: 50 watt
- Escrow: one banknote
- Capacity: 100, 300, 500 and 700 banknote capacity upstacker
- Approximate Shipping Weight: 4 pounds
- Environment
 - Operating Temperature: -15°C to 60°C
 - Storage Temperature: -40°C to 70°C

CUSTOMER SERVICE:

- UNITED KINGDOM**
Tel: +44 (0) 845 094 4380
Fax: +44 (0) 118 907 4061
- GERMANY**
Tel: +49 (0) 695 007 0420
Fax: +49 (0) 695 007 0421
- SWITZERLAND**
Tel: +41 (0) 228 840 410
Fax: +41 (0) 228 840 411
- SPAIN**
Tel: +34 917 497 516
Fax: +34 917 499 356
- FRANCE**
Tel: +33 (0) 1 57 32 30 23
Fax: +33 (0) 1 55 69 56 10
- ITALY**
Tel: +39 (0) 2 69 63 37 22
Fax: +39 (0) 2 69 63 37 23
- REST OF EUROPA**
Tel: +44 (0) 845 094 4390
Fax: +44 (0) 118 907 4062

www.CranePI.com
www.meigroup.com

euovending.sales@meigroup.com
technicalsupport.europe@meigroup.com



CPI U.S.A. HEADQUARTER

3222 Phoenixville Pike, Suite 200
Malvern, PA 19355 USA
Tel.: +1 610 430 2700
Fax: +1 610 918 8898

CPI CANADA

2720 Steeles Avenue West
Concord, ON Canada L4K 4S3
Tel.: +1 905-492-0851
Fax: +1 905-492-0853

CPI UNITED KINGDOM

Unit 51/52 Suttons Business Park
Suttons Park Avenue
Reading, Rg6 1AZ
Tel.: +44 (0) 118 938 1100
Fax: +44 (0) 118 938 1120

CPI GERMANY

Zum Fruchthof 6
D-21614 Buxtehude.
Tel.: +49 (0) 4161 729 0
Fax: +49 4161 729 115

CPI SWITZERLAND

Ch. Pont-Du-Centenaire 109
Plan-Les-Ouates, P.O.Box 2650
1211 Geneva 2
Tel.: +41 (0) 22 884 0505
Fax: +41 (0) 22 884 0504



The Complete Payment Solution

MEI CASHFLOW is a registered trademark of MEI. Information is subject to change without notice. MEI has made every effort to assure that the information in this document is accurate. However, we cannot be held responsible for any errors or omissions.

©2010 MEI. All rights reserved.
MEI is ISO 9001:2000 certified.

